

Nicaragua multielement geochemical GIS data set

March 2020

Recursos del Caribe, S.A.
www.cbmap.net
Carl E. Nelson, president
email: carlericnelson@gmail.com

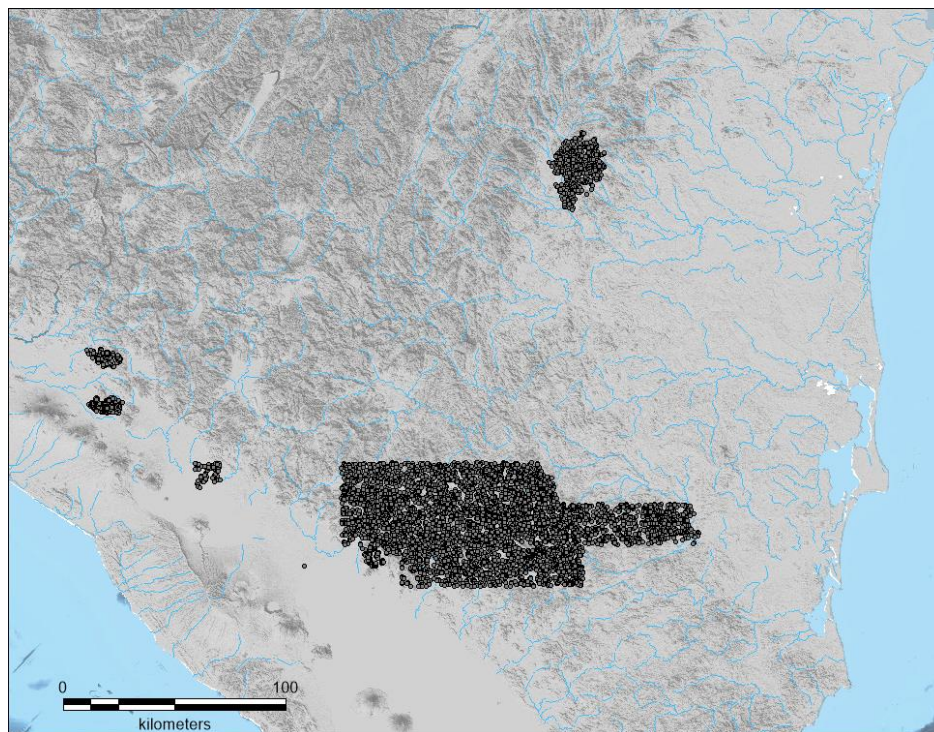
Multielement geochemical data for a total of 9,360 samples has been captured from original sources and compiled as MapInfo (.tab) or ArcGIS (.shp) files. Analytical results are provided for 36 elements including: Au, Ag, Cu, Pb, Zn, Mo, Ni, Co, Cr, As, Sb, Hg, Cd, Bi, Fe, Mn, Te, Ba, V, Sn, W, La, Al, Mg, Ca, Na, K, Sr, Y, Ga, Li, Nb, Sc, Ta, Ti, and Zr.

The data set is composed of 1324 traditional stream sediment samples, 6431 non-traditional stream sediment samples (quartz fragments in stream sediments), 219 pan concentrate samples, 1 soil sample and 1385 rock samples. A drainage map and a shaded relief base map are included to aid with interpretation and application of the data set to exploration.

A sample location map along with a list of surveys from which the data set was compiled are provided on the following pages. Sampling and analytical procedure is described in survey reports which are provided, as pdf files. The Nicaragua Multielement Geochemical Data set is designed to be used as a stand-alone product or with CentralAmericaMap, a regional GIS data set for geology, mines and mineral occurrences, land status and radiometric dates.

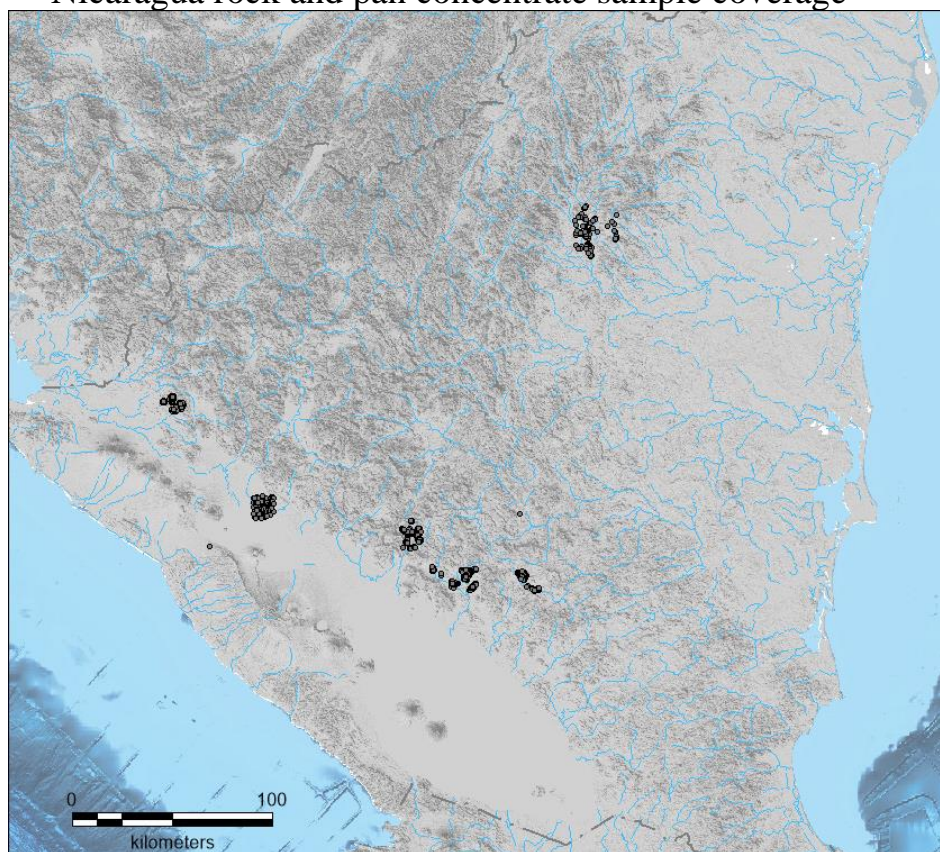
Pricing, in ArcGIS or MapInfo format: US \$13,000.

Prospective clients are invited to “test drive” the data sets via a screen sharing session before making a purchase.



Nicaragua multielement stream sediment sample coverage

Nicaragua rock and pan concentrate sample coverage



Nicaragua Multi-Element Geochemical Data Set

Program	Location	Area (sq km)	Number of SS samples	Sample density	Elements Analyzed
SAREC (1983)	Santa Emilia	1	19	19	Au, Ag plus trace elements
	Santa Pancha	0.6	9	15	
	Mojon	15	31	2	
SGAB – INMINE (1982)	Garcerero	86	149	1.6	Au
SGAB – INMINE (1984)	El Garcero	33	0		Au and Ag
	La Ceibita	4	38	9.5	Au and Ag
	El Zapote	18	111	6	Au and Ag
	Los Jobitos	12	0		Au and Ag
SGAB – INMINE (1984)	Nata-Pitahaya Talavera Norte	66	229 0	3.5	Au plus 31 elements
SGAB (1987)	Boaco - Rama	6,210	6,111	1	Au, Ag plus 31 elements
SGAB - INMINE (1988)	Sauce Oeste	24	0	0	Au, Ag
		24	205 rock		
INMINE (1988)	La India	55.4	86	11	Au, Ag, Pb Zn, Cu, Mo, Co
INMINE (1989)	Juigalpa Norte	20	101 rock	5	Au, Ag, Pb, Zn plus major elements
INMINE (1991)	Siuna	517	498	1	Au, Ag, As, Pb, Cu, Zn
Total			7755		